



*The
Productivity
Star*



CS-C4035E/C3232E/C3225E/C2525E

Document
Imaging
Solutions

CS-C4035E/C3232E/C3225E/C2525E

*Brilliant Color.
Brilliant Performance.*



CS-C4035E/C3232E/C3225E/C2525E Highlights

- *Fast Color/B&W Output*
- *Standard Print, Scan, Copy*
- *Optional Fax/Network Fax*
- *600 X 600 dpi Resolution*
- *Standard 40GB System Hard Disk Drive*
- *Up to 4,100 Sheet Paper Capacity*
- *Advanced Finishing and Paper Handling Options*
- *Industry Leading Reliability and Durability*

A new evolution in office productivity is emerging, led by breakthrough document imaging products from Copystar. Featuring industry-leading reliability, exceptional color and black & white imaging, and superior functionality, the CS-C4035E, CS-C3232E, CS-C3225E and CS-C2525E multifunctionals allow businesses to unlock the full potential that these devices bring to the Workgroup.

Copystar's color multifunctional digital imaging systems address today's converging document needs, while adding the value of color to critical business communications. The CS-C4035E, CS-C3232E, CS-C3225E and CS-C2525E provide today's workgroup with a Multifunctional device that can print, copy, and scan, in color or black & white, satisfying any document requirement. In addition, the standard 40GB system Hard Disk Drive provides businesses with the ability to store documents at the device, for easy access and on-demand output. For businesses with facsimile at the core of their communications process, an optional fax system can be added to enhance these systems, simplifying document distribution.

With fast throughput speeds up to 40 pages per minute in black & white and 35 pages per minute in color, these high performance devices are designed to meet the demands of the busiest workgroups, in one affordable solution. Innovative networking tools and components, security features and advanced management utilities make it easy to integrate the versatile CS-C4035E, CS-C3232E, CS-C3225E and CS-C2525E into any environment, while providing the user with precise control over document input and output. Enhanced multitasking capabilities enable the devices to process multiple jobs simultaneously, resulting in cost effective time savings and maximum performance. With optional paper handling, document processing and enhanced finishing features, the CS-C4035E, CS-C3232E, CS-C3225E, and CS-C2525E are transforming document productivity for the workgroup. Discover how they can help your business unlock its full potential.



525E

Color is Compelling...and Competitive

Today's companies are embracing color to ensure business communications are more effective in a competitive economy. Color persuades, adding visual impact to documents, sales and marketing materials, financial analysis and spreadsheet data. The CS-C4035E, CS-C3232E, CS-C3225E and CS-C2525E address the document imaging needs of workgroups of all sizes, providing the ability to incorporate color into their daily output, as well as provide excellent black & white images, without sacrificing features and functionality. The result is vibrant documents and high image quality with the added benefit of Kyocera's long life technology, dependability and reliability.

Taking the Guesswork Out of Color Imaging

Copystar's color technology simplifies document imaging, meaning office users don't need to be experts to achieve brilliant color output. With One Touch Image Adjustment, Color Balance and Hue Adjustment, users can easily modify copy originals from the control panel to achieve the output they desire. Increase or decrease saturation, adjust sharpness and contrast, and color correct older or poorly developed images for exceptional output every time.

Smart Features for Cost-Effective Operation

We have equipped the CS-C4035E, CS-C3232E, CS-C3225E and CS-C2525E with intelligent features to control costs between color and black & white images, or when business documents are mixed between black & white and color originals. Features such as Color/B&W Selection allow users to output both color and black & white finished sets from a single document, improving productivity, controlling costs, and adding versatility to any company's workflow.

Industry Leading Reliability and Dependability

Copystar products have become synonymous with the terms reliability and dependability. The CS-C4035E, CS-C3232E, CS-C3225E and CS-C2525E feature imaging drums with a rated yield of 300,000 impressions, and a Preventive Maintenance (PM) cycle to match. What does this mean to your workgroup? Maximum uptime, improved performance, and the ability to go about the business at hand. Exactly what your company deserves.

Power to Perform in Color and Black & White



Exceptional Output

Whether the need is for full color or black & white output, the CS-C4035E, CS-C3232E, CS-C3225E, and CS-C2525E rise to the challenge, at speeds up to 40 pages per minute.



High Toner Yields

A unique design combining toner and waste in one cartridge per color helps save time and money, while being environmentally friendly. High yields mean office users will replace supplies less frequently.

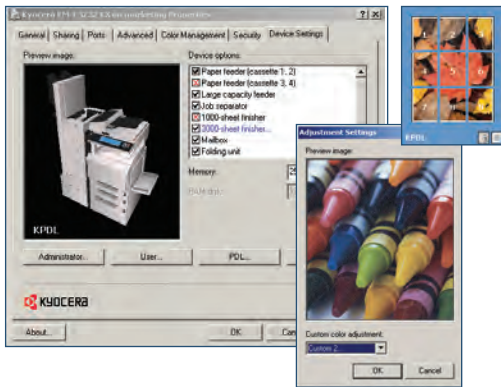


Monocolor Selection

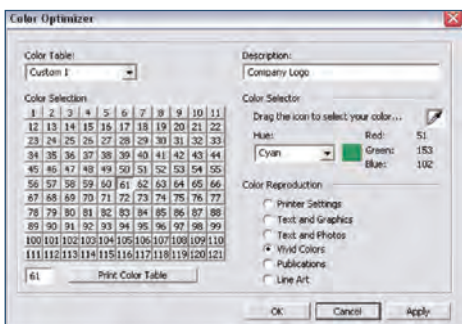
Add drama to black & white documents by producing copy output in one of six colors: Cyan, Magenta, Yellow, Red, Blue or Green.

CS-C4035E/C3232E/C3225E/C2

Brilliant Color.
Brilliant Performance.



Kyocera's KX Driver provides users with complete control over their document output. Whether you require two-sided printing, advanced finishing, poster mode, or custom color adjustment all features are accessible from the easy to navigate interface of the KX Driver.



Color Optimizer

The Color Optimizer is a plug-in for the KX Driver that allows customers to improve color selection on their critical printed documents. It is designed to better replicate colors in corporate logos and trademarks, and improve color accuracy when it is required.

From the Color Optimizer plug-in, users can sample specific targeted colors, print a corresponding matrix, and select the appropriate color for optimized document output.

Enhanced Print Capabilities Mean Serious Business

Your business demands great images but your documents are in black & white, color, or a combination of both. The standard printing capabilities of the CS-C4035E, CS-C3232E, CS-C3225E, and CS-C2525E are up to the challenge.

- Powerful print processing handles today's complex print jobs with ease, at speeds up to **40 pages per minute in black & white and 35 pages per minute in color**
- The standard **10/100BaseTX Network Interface** offers desktop printing capabilities from virtually any network environment or platform including Windows®, Mac, Linux, and UNIX
- Standard page description languages supported include **PCL 6** (PCL XL, PC5c), **KPDL3** (PS3), and **Kyocera's PRESCRIBE**

Output the Way Your Business Requires It

The optional e-MPS Printer Hard Disk Drive enhances the full functionality of the CS-C4035E, CS-C3232E, CS-C3225E, and CS-C2525E by providing features to help meet your specific requirements.

- **Private Print** – Send confidential documents to the printer and don't release them until a personal access code is entered at the device
- **Job Storage** – Store and recall frequently printed documents at the device for easy retrieval
- **Virtual Mailbox** – Create a virtual mailbox for employees to store print jobs; up to 255 locations can be created
- **Quick Copy** – Print additional sets from the device without having to resend the job
- **Proof and Hold** – Print and review a single set of a long run before releasing the entire job

Maximize Performance with Copystar Features

For maximum print performance, Kyocera's Print Utilities like **PDF Direct Print** provide the workgroup with innovative technology designed to boost productivity. Print full color and black & white PDF files directly from the desktop, without the need to open an application.

With the CS-C4035E, CS-C3232E, CS-C3225E, and CS-C2525E, users have the ability to print on a wide array of paper stocks, from 16 lb Bond to 120 lb Index, in sizes ranging from Statement to Ledger. Print resolutions of 600 x 600 dpi and 256 levels of grayscale ensure sharp, professional looking color or black & white output from the first print to the last.

525E



Advanced Functionality

The user-friendly touch screen makes advanced functionality available at the touch of a button. Choose from: Rotate Copy, Page Numbering, Reduction/Enlargement, Border Erase, Mirror Image, Cover Mode, Margin Shift, and more to customize output every time.



Finishing Option

An impressive array of Finishing Options further enhances print and copy productivity and flexibility.



Paper Handling

The standard 3-way 1,100-sheet paper capacity offers universal sizing from statement to ledger for any business requirement. Options include an additional 500 x 2 Paper Drawer or a 3,000-sheet letter sized drawer.

All the Features and Functionality You Need for Exceptional Output

The CS-C4035E, CS-C3232E, CS-C3225E, and CS-C2525E merge color and black & white output with all the robust features and capabilities needed for day-to-day office activity. Designed with the busy workgroup in mind, the devices are uncompromising in their reliability and performance. An impressive 45 second warm-up time, fast first copy out times for color and black & white, and fast output speeds combine with automatic drawer switching and selection to ensure the right media is printed every time. Robust paper tray capacities of 1,100 sheets standard and up to 4,100 sheets means trays need to be filled less often, allowing users to focus on the work that needs to get done.

The CS-C4035E, CS-C3232E, CS-C3225E, and CS-C2525E take output seriously. Six imaging modes and 600 x 600 dpi resolution ensure crisp, true image quality on every page. Image control features are easily accessible from the intuitive Touch Screen to ensure the desired output every time.

Control Costs for Color and Black & White Output

Access management is critical for many businesses to control costs, especially with color output. With the CS-C4035E, CS-C3232E, CS-C3225E, and CS-C2525E, administrators can assign up to 1,000 Account Codes for Printing and Copying and generate tracking reports for an individual or a department. Kyocera's **KM-NET for Accounting** tool allows administrators to manage cost control directly from their desktop.

Finishing Options Add Flexibility

Document Finishing is imperative for professional looking output. With all of the finishing options available on the CS-C4035E, CS-C3232E, CS-C3225E, and CS-C2525E, you are guaranteed a professional appearance with every document you print and copy.

- **3,000-sheet Multi-Position Finisher** – the 3,000-sheet Multi-Position Finisher allows users to staple up to 50-sheets, add 2 or 3 Hole punch for binder inclusion, or create folded saddle stitched booklets with letter, legal or ledger sized paper.
- **1,000-sheet Simple Finisher** – The single position finisher provides workgroups with an alternative to the 3,000-sheet Finisher and allows stapling of up to 30 sheets of letter sized paper.

CS-C4035E/C3232E/C3225E/C2

*Brilliant Color.
Brilliant Performance.*

Support your document imaging processes with powerful software solution options:

Simplify the Document Workflow Process

Designed for small to medium sized businesses, this easy-to-implement solution allows you to scan and capture documents from the CS-C4035E, CS-C3232E, CS-C3225E, and CS-C2525E, then index and OCR each page for full text searching, and convert them into multiple formats to route across various destinations.



iTag Document Management Solution

The perfect out-of-the-box solution for businesses or departments looking to systematically organize their hardcopy documents by capturing and converting them to digital files for storing, sharing and retrieving electronically.



Transform the Document Workflow Process

For enterprise environments, this server-based Document Capture Workflow Solution enables the capture, process and routing of paper or electronic documents to multiple locations. Realize increased document workflow efficiencies and cost savings.



Standard Scanning for Sharing and Storage

For many businesses, the need for scanning is growing. Managing documents and delivering electronic content is critical for companies to do business. The CS-C4035E, CS-C3232E, CS-C3225E, and CS-C2525E offer impressive standard black & white and color scanning features that allow users to share and create electronic files from hardcopy originals. Whether your requirements are for full color PDFs, black & white TIFF images for editing and inclusion in a text document, or color JPEG files to add pictures and images in a presentation, high quality images can be scanned quickly and easily with these devices.

With speeds up to 40 black & white images per minute and 35 color images per minute, scans can be delivered at resolutions up to 600 dpi. Multipage files can be scanned as a single document, or in the case of invoices and bills of lading, as separate individual pages, improving the overall business process for the workgroup.

Standard scanning functions include:

- **KM Document Flow** – Scan to Database
- **Scan to File** for PC and Mac
- **Scan to E-mail** with LDAP accessibility
- **Scan to SMB** (Server Message Block)
- **Scan to FTP** (File Transfer Protocol)
- **TWAIN Scanning** from the desktop for either PC or Mac

Standard PDF Compression & Encryption

Everyone knows how large scanned documents can be when they are in full color. And sometimes business requires that these scans be password protected. PDF Compression & Encryption will accomplish both of these tasks and more.

- Compress color scans from the Control Panel
- Set passwords for scanned PDF files
- Encrypt PDF files for security and peace of mind

Optional Fax/Network Fax Boost Capabilities

The optional monochrome fax kit provides the CS-C4035E, CS-C3232E, CS-C3225E, and CS-C2525E with all the capabilities of a Super G3/33.6 Kbps standalone fax machine, with the added benefit of faxing directly from the desktop. High-speed transmission combines with all the fax functionality businesses require. Network Faxing directly from the convenience of the desktop saves precious time and financial resources, improving every company's return on investment.

525E

Scan & Fax ■ Network Fax ■ Network & Solutions

Security and Compliance

A wide array of Section 508 accessibility features have been incorporated into the CS-C4035E, CS-C3232E, CS-C3225E and CS-C2525E:

- **Tiltable Control Panel** – allows for easy viewing of the Touch Screen Interface when seated
- **Easy View Numbers** – numbers around the platen frame are enlarged and printed using high contrast colors for added visibility
- **Easy Open Large Capacity Drawer** – enables wheelchair-bound users easy access to paper

Data Security Kit (D)

An advanced solution for managing and protecting the security of information across select Copystar Multifunctionals, the optional Data Security Kit (D) is designed to meet the privacy demands of today's digital office environments. Acting as a powerful "Memory Scrubber," it automatically overwrites information stored on a hard drive when a device is powered up, and/or after each copy/print/scan job. This prevents unauthorized user access to confidential information retained in the device's internal memory. Data Security Kit (D) is ISO 15408 Certified.



Harnessing the Power and Productivity of Network Connectivity

Businesses of all sizes have come to depend on networked devices to facilitate their critical business activities. The CS-C4035E, CS-C3232E, CS-C3225E, and CS-C2525E rise to the challenge with an impressive suite of Kyocera designed intelligent network/connectivity solutions, empowering businesses and providing solutions that promote Document Creation and Output, Document Management, Security and Compliance and Network and Device Management.

Kyocera's PRESCRIBE Solutions

Businesses can leverage the economical choice of Copystar MFPs with complex applications and the ability to store and print forms on demand, as part of the print workflow. Cost-effective and highly productive, they eliminate the need for expensive pre-printed materials and the storage space these forms require.

The KM-NET Suite of Utilities and Tools

These utilities offer powerful network and device management for all Copystar MFPs. **KM-NET Viewer** is an administrative tool that provides real-time access to output devices deployed on the network. It allows an administrator to respond to any issue quickly and efficiently, reducing the burden on the workgroup and maximizing productivity.

Kyocera Command Center is the intuitive web-based portal that manages individual devices, with the ability to set security levels, protocols, filters and device defaults in an easy to navigate interface.

Industry-leading reliability, exceptional yet affordable color and black & white imaging, and superior functionality make the CS-C4035E, CS-C3232E, CS-C3225E and CS-C2525E compelling solutions that are raising the bar in office productivity. They are the powerful document imaging solutions your business needs.

CS-C4035E/C3232E/C3225E/C2525E Specifications

Basic Specifications:

Configuration:	Workgroup Color Multifunctionals with Standard Network Print / Scan and Optional Fax / Network Fax. Standard Duplex, 500 x 2 Sheet Paper Drawers and 100 Sheet Multipurpose Tray. Standard 40GB System Hard Disk Drive. Optional Document Processor, Paper Handling and Advanced Finishing.
Resolution:	Multi-Bit 600 x 600 DPI Resolution / 256 Levels
System Memory:	Standard 768MB RAM; 40GB HDD
Magnification:	Full Size, 5 Reduction, 5 Enlargement Preset Ratios, Plus 25-400% Zoom (at 1% increments)
Electrical Requirements:	120V, 60Hz, 12A
Dimensions:	23.82"W x 26.30"D x 29.33"H
Weight:	222.7 lbs (CS-C4035E), 215.6 lbs (CS-C3232E, C3225E, C2525E)
Max Monthly Volume:	CS-C4035E – 150,000 Pages Per Month CS-C3232E – 125,000 Pages Per Month CS-C3225E – 100,000 Pages Per Month CS-C2525E – 85,000 Pages Per Month

Output Speeds:

Warm-Up Time:	Within 45 Seconds, Program During Warmup, Auto Start
First Copy Out (Color / Mono):	CS-C4035E – 7.5/5.5 Seconds CS-C3232E/C3225E/C2525E – 7.9/5.9 Seconds
First Print Out (Color / Mono):	CS-C4035E – 7.5/5.5 Seconds CS-C3232E/C3225E/C2525E – 7.9/5.9 Seconds
Pages Per Minute (Color / Mono):	CS-C4035E – 35/40 Letter, 17/20 Legal and Ledger CS-C3232E – 32/32 Letter, 16/16 Legal and Ledger CS-C3225E – 25/32 Letter, 13/16 Legal and Ledger CS-C2525E – 25/25 Letter, 13/13 Legal and Ledger

Paper Supply:

Standard Paper Sources:	Dual 500 Sheet Drawers, 100 Sheet MPT, Auto Selection / Switching, Add Paper While Running
Drawer Paper Size:	5.5" x 8.5" – 11" x 17"
MPT Paper Size:	5.5" x 8.5" – 11" x 17"
Std / Max Paper Capacity:	1,100 / 4,100
Paper Weight:	16 - 28 lb Bond via Paper Drawers, 16 lb Bond - 120 lb Index via MPT
Input Materials:	Bond Paper, Recycled Paper, Transparencies, Cardstock, Envelopes

Duplex Unit:

Paper Size:	5.5" x 8.5" – 11" x 17"
Paper Weight:	16 - 28 lb Bond
Duplex Modes:	Standard 1:2, 2:2, Book: 2, 2:1

Copy Functions:

Imaging Modes:	Text, Photo, Text / Photo, Auto, Manual, ECO, Map
Continuous Copy:	Up to 999, Auto Reset to 1
Additional Features:	Positive / Negative Reverse, Mirror Image, Rotate Copy, Border Erase, Split Copy, Rotate Sort, Full-Color & Monochrome copy sets in same run, Electronic Sort, Margin Shift, XY Zoom
Job Management:	Job Interrupt, Job Build, 8 Job Programs, Repeat Copy, 1,000 Department Management Codes
Color Adjustment:	OneTouch, Color Balance, Hue, Auto Exposure, 6 Monotone Colors, Manual Exposure, Auto GrayScale, Sharpness, Color Calibration

Paper Handling Options:

Document Processor: DP-710

Type:	Reversing Automatic Document Processor
Acceptable Originals:	5.5" x 8.5" – 11" x 17", Mixed Size Originals
Capacity / Speed:	100 Sheet RADF; CS-C4035E - 35 / 40 Letter Size Originals Per Minute CS-C3232E/C3225E/C2525E - 32 / 32 Letter Size Originals Per Minute
Paper Weight:	9 - 42 lb Bond
Dimensions / Weight:	22.5"W x 19.2"D x 5.28"H / 25.4 lbs

Finisher: DF-710

Stack Capacity:	Main Tray: 3,000 Sheets; Sub Tray (B): 200 Sheets; Sub Tray (C): 50 Sheets
Paper Size:	Main Tray: 8.5" x 11" – 11" x 17"; Sub Tray (B): 5.5" x 8.5" – 11" x 17"; Sub Tray (C): 8.5" x 11"
Paper Weight:	16 - 28 lb Bond
Staple Capacity:	50 Sheets: 8.5" x 11"; 30 Sheets: 8.5" x 14", 11" x 17"
Edge Staple Position:	3 Positions: Top Left, Bottom Left, Center Bind
Punch:	Optional 2 and 3 Hole
Saddle Stitch / Fold:	Optional Booklet Folder
Dimensions / Weight:	26.9"W x 22.2"D x 42.8"H / 125.6 lbs

Simple Finisher: DF-730

Stack Capacity:	1,000 Sheets
Paper Size:	8.5" x 11" - 11" x 17"
Paper Weight:	16 - 28 lb Bond
Staple Capacity:	30 Sheets: 8.5" x 11"; 20 Sheets: 8.5" x 14", 11" x 17"
Edge Staple Position:	1 Position: Top Left
Dimensions / Weight:	21.9"W x 20.7"D x 36.1"H / 55 lbs

Booklet Folder Unit: BF-710

Folding Capacity:	Up to 16 Sheets
Capacity:	1 - 3 Sheets - 30 Booklets; 4 - 6 Sheets - 20 Booklets; 7 - 16 Sheets - 10 Booklets
Paper Size:	8.5" x 11", 11" x 17", 8.5" x 14"
Paper Weight:	16 - 28 lb Bond, Over 20 lb is one sheet only
Dimensions / Weight:	25.7"W x 17.9"D x 10.5"H / 46.3 lbs

Job Separator: JS-710

Stack Capacity:	100 Sheets
Paper Size:	8.5" x 11" - 11" x 17"
Paper Weight:	16 - 28 lb Bond

Multi-Tray Mailbox: MT-710

Number of Trays:	7
Tray Capacity:	100 Sheets: 5.5" x 8.5", 8.5" x 11"; 50 Sheets: 8.5" x 14", 11" x 17"
Paper Weight:	16 - 20 lb Bond
Dimensions / Weight:	20.0"W x 15.7"D x 18.5"H / 22 lbs

Punch Unit: PH-5A

Paper Size:	8.5" x 11" - 11" x 17"
Paper Weight:	16 - 28 lb Bond
Number of Holes:	2 and 3
Weight:	6.6 lbs

Large Capacity Tray: PF-750

Paper Capacity:	3,000 Sheets
Paper Weight:	16 - 28 lb Bond
Paper Size:	8.5" x 11"
Dimensions / Weight:	23.0"W x 23.6"D x 12.4"H/ 50.7 lbs

Dual Paper Drawers: PF-710

Paper Capacity:	500 Sheets x 2
Paper Weight:	16 - 28 lb Bond
Paper Size:	5.5" x 8.5" - 11" x 17"
Dimensions / Weight:	23.0"W x 23.2"D x 12.4"H/ 57.3 lbs

Standard Print/Scan:

Print:	
Controller:	CS-C4035E/C3232E - Embedded PowerPC750GL / 800 MHz Controller CS-C3225E/C2525E - Embedded PowerPC750FL / 600 MHz Controller
Printer Memory:	Standard 256MB, Upgradeable to 1GB via 100 Pin DIMMS, Optional Printer HDD, Standard CF Card Slot (Type 1)
Supported PDL/Emulations:	PRESCRIBE, PCL6 (PCL XL, PCL 5c), KPDL3 (PS3), KCGL (HP-GL/2)
Fonts:	80 Outline Fonts for PCL XL/5c, 136 Outline Fonts for KPDL3, 1 Bitmap Font
Windows® OS Compatibility:	Windows 95/98/Me/NT4.x/2000/XP/2003/Vista
Novell® OS Compatibility:	Novell NetWare 3.x/4.x/5.x/6.x
Mac OS Compatibility:	OS 8.x/9.x/10.x
UNIX OS Compatibility:	Sun OS 4.1.x; Solaris 2.x; AIX, HP-UX (LPR)
Standard Interface:	10/100BaseTX, Parallel IEEE1284, High Speed USB 2.0
KUIO LV Expansion Slots (2):	Optional Printer Hard Disk Drive; Optional IB-23 Secure NIC
Supported Protocols:	TCP/IP, IPX/SPX, AppleTalk, NetBEUI
Driver:	KX Driver for Windows, PPD for Mac, PPD for Linux/UNIX, Certified Uni Driver, Windows 64-Bit Drivers
Utilities:	KMnet Admin, KM-NET Viewer, KM-NET for Client, PDF Direct Print, PRESCRIBE Utilities
Web Interface:	Kyocera Command Center

Scan:

Type:	Color and Monochrome Scanner
Resolution:	200, 300, 400, 600 DPI
Scan Speed (Color / Mono):	Up to 35 / 40 Sheets Per Minute
File Formats (Color / Mono):	PDF, JPEG / PDF, TIFF
Enhanced PDF Scanning:	PDF Encryption, PDF Compression
Connectivity:	10/100BaseTX
Supported Protocols:	TCP/IP
Scanning Features:	KM Document Flow (Scan to Database) TWAIN (PC/Mac) Scan to File (PC/Mac), Scan to FTP, Scan to e-Mail, Scan to SMB
Driver:	TWAIN Driver
Utilities:	KM DB-Assistant, KM Scanner File Utility, KM Scanner Address Book, Address Book Editor, LDAP Converter Utility, Network Advanced Setup Utilities, Scan to Mac Utility

Optional Data Security Kit: (D)

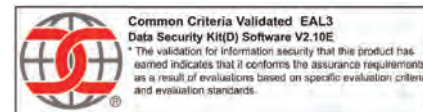
Provides Security Overwrite and Encryption for Print, Copy, and Scan; ISO 15408 Certified

Optional Fax/Network Fax: FAX SYSTEM (N)

Compatibility:	Super G3
Transmission Speed:	Approximately 3 Seconds per page
Modem Speed:	33.6 Kbps with Auto Fallback
Data Compression:	JBIG, MMR, MR, MH
Fax Memory (Std/Max):	4MB / 32MB
Driver:	KM Network Fax Driver
Utilities:	Address Book for Network Fax, Address Editor for Fax
Additional Features:	Duplex TX/RX, Confidential RX/TX, Polling, Broadcasting, 2 in 1 FX

Additional Options:

KYOcapture, KYOCapture Express, iTag, 32MB Fax Memory (MM13-32), Platen Cover, Attachment Kit (AK-710), Printer Memory 128, 256, 512MB RAM, Printer Hard Disk Drive, Stand



Specifications and design are subject to change without notice.
For the latest on connectivity visit www.copystar.com
All trademarks are the property of their respective owners.

Kyocera Mita America, Inc. Headquarters:
225 Sand Road, PO Box 40008, Fairfield, NJ 07004-0008, USA
©2007 Kyocera Mita America, Inc.



www.copystar.com